



**Uva Cellars™**

*Made in Canada*

— — THE ORIGINAL COLLECTION · VOLUME 01

*the*  
*Catalogue.*

---

— EDITION

2026

— 00 · A NOTE FROM THE FOUNDER

A cellar  
should be  
*quiet*, and a  
little  
romantic.

— LETTER

*Christian R. Gossain*  
FOUNDER · UVA CELLARS™

U va Cellars™ began as a question. Why do the rooms we keep our wines in feel less considered than the wines themselves? A cellar, properly kept, is a private library — its own light, its own weather, its own small ceremonies.

This catalogue is the answer, drawn at scale. Hardware that holds the room together. Software that keeps a quiet record of every bottle. And a service that arrives, measures, builds, and leaves the wine in your hands.

Every page is intended to be read slowly. So is the cellar.

— CONTENTS



## In *ten* chapters.

*The hardware, the application, the service. A reading order chosen for the room before the screen.*

---

I	About Us	P. 04
II	Our Clients	P. 06
III	How it Works	P. 12
IV	Smart Sommelier™	P. 14
V	Coming Soon	P. 16
VI	Modularity	P. 18
VII	Cradle Finishes	P. 24
VIII	Tech Highlights	P. 26
IX	Streamlined Installation	P. 30
X	Specifications	P. 32

---

# Storage, *redefined.*

Uva Cellars merges high-end custom craftsmanship with cutting-edge technology. Bespoke racking systems with Smart Sommelier™ integration, offering seamless real-time inventory tracking for your collection.

Local lighting responds the moment a bottle is removed or returned. Your cellar becomes a unique, living display where every interaction is both beautiful and smart — a record kept in glass and grain.

*"A cellar is a private library. The brand should read like one too."*

More than an organizational tool, the system doubles as a quiet, interactive piece of architecture — every cradle a small instrument of light.

— FOUNDED  
2023

— ORIGIN  
Edmonton, AB

— MADE  
In Canada

— EDITION  
Volume 01

*A cellar, kept  
like a library.*

— 02 · THREE AUDIENCES

# Our *Clients.*

Serving private collectors, hospitality professionals, and design visionaries seeking a next-generation smart wine storage system — quiet by default, expressive on cue.

## — 01 Private *Collectors*

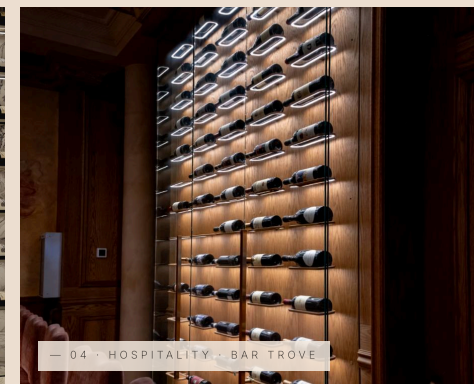
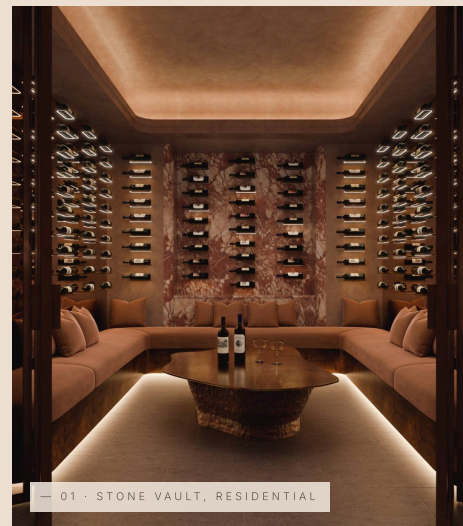
For the home cellar that should feel like a library — bespoke design, concierge sommelier, an auditable record.

## — 02 *Hospitality*

For restaurants, hotels, and members' clubs. The same hardware, tuned for the floor and the wine list.

## — 03 *Design Visionaries*

For architects and studios specifying a centerpiece — a system that integrates with stone, wood, and metal as quietly as a fixture.



Four rooms. Across residence, hospitality, and bar — the same cradle, three different settings.

— 02.A · FOR THE HOME CELLAR

# Private Collectors.

Say goodbye to tedious ledgers and spreadsheets. The Smart Cellar™ provides effortless inventory tracking — every bottle logged instantly, for a real-time, accurate view of the collection.

Know exactly when each bottle is in its ideal drinking window. Filter the cellar by varietal, region, or vintage to find expert pairings for any meal — and showcase it with ambient lighting that turns storage into living, interactive art.

"A cellar, kept like a library."



— RESIDENTIAL · STONE VAULT

— 02.A · FOUR TRAITS OF THE SMART CELLAR

## Storage that *knows* *itself.*

i. EFFORTLESS TRACKING

Your entire collection, automatically logged and organized.

ii. SMART PAIRINGS

Instant recommendations through the Smart Sommelier™ app.

iii. TOTAL INSIGHT

Know every bottle's location and ideal drinking window.

iv. ARTFUL DISPLAY

Ambient lighting transforms your cellar into living design.

— 02.B · FOR THE FLOOR

# Hospitality.

Guests love experiences that feel personal and effortless. The interactive wine platform turns choosing a bottle into a moment of discovery — and when guests engage more deeply with the list, they trade up, explore, and enjoy the process. Sales follow.

On the floor it streamlines service. Wait staff have less to memorize — tasting notes, pairings, and bottle locations surface instantly. The cellar accommodates rotating menu features without disruption, and lighting cues draw the eye to the exact bottle the moment a guest selects it.

i. SMART SERVICE

Instant bottle data and pairings at your team's fingertips.

ii. MEMORABLE EXPERIENCE

Dynamic lighting turns wine selection into a guest event.

iii. HIGHER REVENUE

Highlight featured wines and drive premium sales.

iv. DESIGN STATEMENT

A modern focal point that elevates your space.

— THE FIRST HOSPITALITY INSTALL



# Bar Trove.

*Edmonton, Alberta · Canada — a wine bar in white oak, with white oak cradles, white oak panelling, and a glass case enclosure where every selection becomes its own small ceremony of light.*

TYPE

Wine bar · hospitality

CITY

Edmonton, AB

CRADLES

White oak · panelled · glass case

YEAR

2025

# How it works.

For the discerning enthusiast, the system transforms a collection into a living portfolio — blending smart technology with the ritual of curation and enjoyment.



1.

## Scan a bottle into your inventory.

The cradle reads the bottle the moment it lands; the app logs varietal, vintage, and origin without a keystroke.



2.

## Place the bottle on any vacant cradle.

The cellar logs its position automatically — no labels, no lists. Smart Sommelier™ keeps a quiet record from here on.

## From *cradle* to glass.



3.

## Filter by vintage, region, price, or pairing.

Every bottle indexed and instantly retrievable through Smart Sommelier™.



4.

## The chosen bottle is illuminated for retrieval.

The selected cradle lights up with a gentle spotlight — find the bottle without opening another door.



5.

## Enjoy the moment.

Pour, share, and pour again — the cellar updates itself the instant the bottle leaves its cradle.

— 04 · THE COMPANION

# Smart Sommelier™

Full access to your inventory, in your pocket. Light up the exact bottle you're looking for — and keep a quiet record of every pour.

— REAL-TIME INVENTORY

*Stay organized.*  
Automatic updates every time a bottle is added or removed.

— INTELLIGENT SEARCH

*Locate any bottle instantly.*  
Smart filters for varietal, region, or vintage.

— SMART FILTERS

*Sort by drinking window.*  
Rate, pair, and surface the right bottle for the moment.

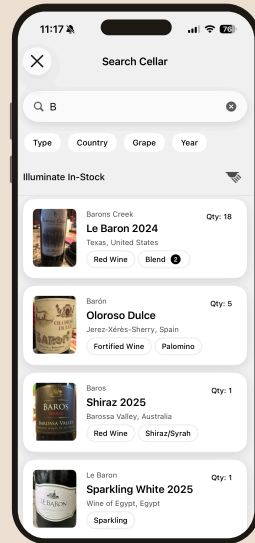
— PAIRING SUGGESTIONS

*The right wine for the meal.*  
Discover the perfect match for any dish or occasion.

— COLLECTION INSIGHTS

*Track favourites over time.*  
Consumption trends and preferences sharpen the cellar.

\* MORE FEATURES ARRIVING WITH FUTURE UPDATES



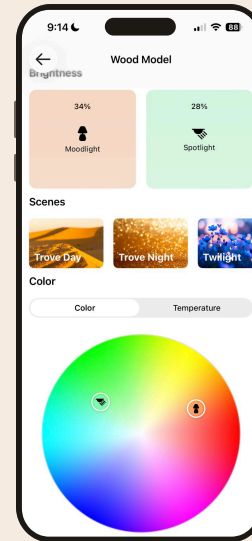
App - iOS - search results with beetle thumbnails & varietal tags.

Lighting controls →

— 04.A · LIGHT, CONTROLLED

## A cellar lit like a library.

Lighting that follows the room — soft for reading the labels, sharper to highlight the bottle in hand.



App - Moodlight + Spotlight - scenes - color/temperature wheel.

- A** ADJUSTABLE BRIGHTNESS  
Fine-tune lighting levels to set the perfect mood or highlight featured bottles.
- B** MOODLIGHT & SPOTLIGHT  
Soft ambient glow for tastings, or focused light to highlight a single bottle.
- C** PRESET SCENES  
Curated moods like Twilight or Sunset with a single tap.
- D** TEMPERATURE ADJUSTMENT  
Cool daylight to warm candlelight; 2,700K warm-white diodes anchor every scene.
- E** COLOUR SELECTION  
Full RGB spectrum for personal cellar ambiance.

# Coming Soon.

— The platform expands — two products in development, building on the cellar.

— FEATURE 05.A · FOR COLLECTORS

## Palate IQ™

A continuously learning wine-preference engine — every rating, bottle choice, and drinking pattern turned into a smarter recommendation.

01 — CAPABILITY

Personalised palate fingerprint.

Flavour preferences mapped across grape, region, style, and structure.

02 — CAPABILITY

Continuously learning.

Every rating and pairing logged sharpens the model over time.

03 — CAPABILITY

Intelligent recommendations.

Surfaces exactly which cradle to pull — from cellar to glass.

"From inventory to a genuinely intelligent personal sommelier — your Smart Sommelier™ gets smarter with every interaction."

— 05.B · FOR RESTAURANTS

## Uva Carte™

A fully integrated wine and food menu platform built around the actual dishes — using live cellar inventory, chef notes, and Smart Sommelier™ pairing logic.

The Tasting Room	
MAINS	
Beef Wellington <i>Mushroom · puff pastry · jus</i>	\$68
Duck Confit <i>Cherry gastrique</i>	42
Truffle Risotto <i>Agol parmesan · winter truffle</i>	38
Seared Scallops <i>Citrus beurre blanc</i>	36
Pan-Seared Halibut <i>Beurre noisette · capers</i>	44

— SMART PAIRING · SUGGESTED

### Château Lynch-Bages

*Pauillac · Bordeaux · 2018*

Structured tannins balance the beef ·  
cassis and graphite lift theduxelles.  
Decant 60 minutes ahead of service.

REGION · BORDEAUX · PAUILLAC  
GRAPE · CABERNET SAUVIGNON  
SERVICE · DECANT · 60'  
WINDOW · 2025 — 2040

---

12 IN CELLAR · LIVE **\$245**

- © Pairings generated from the operator's actual menu inside Uva Carte™.
- © Guests access tasting notes, chef notes, and live availability from one menu.
- © Pairs with Palate IQ™ — recommendations match menu & personal taste.

# Modularity.

Engineered for total design freedom —  
across any space, style, or surface.



## Fully *configurable.*

**O**ur cradle system is designed for unrivaled architectural flexibility — seamless integration into any high-end residential or commercial space. The proprietary magnetic gravity-latching mechanism supports tool-free installation across exotic hardwoods, architectural stone, metals, and alloys.

Structural integrity is discreetly maintained behind the finish — accommodating diverse cellar designs and capacity requirements.

— THREE CONFIGURATIONS

- i. Column Mount *Label-forward display* P. 2.0

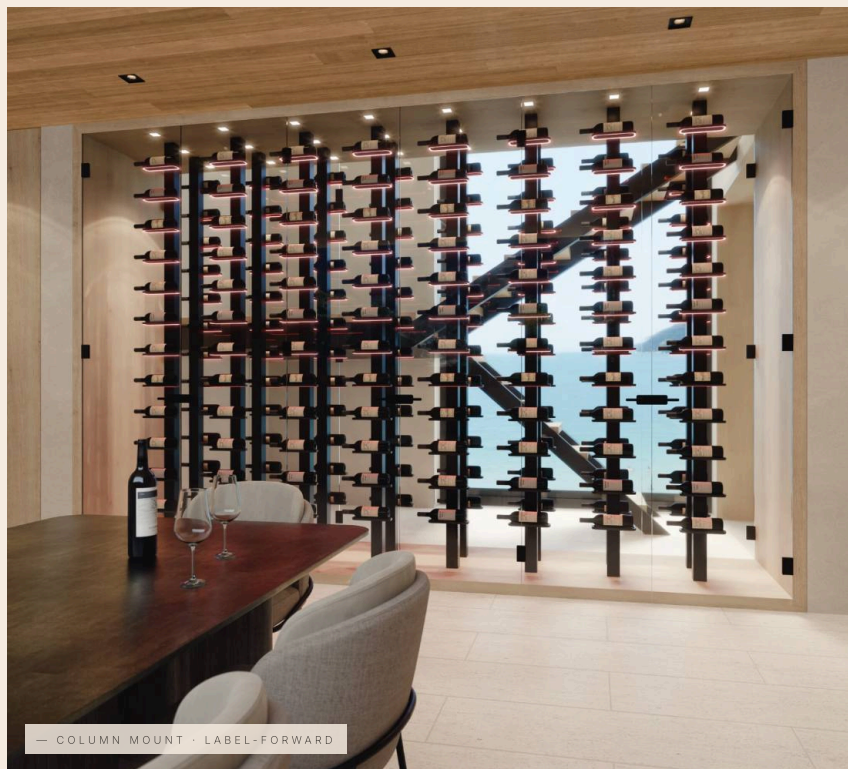
---

- ii. Panel Mount *Label-forward display* P. 2.1

---

- iii. Column Mount *Cork-forward storage* P. 2.2

Mix & combine within one install →



— COLUMN MOUNT · LABEL-FORWARD

## 01. Column Mount

### *Label-forward display*

A standalone architectural element, showcasing wine away from structural walls. The cradles attach to vertical columns, forming cellar islands, glass-enclosed partitions, or floor-to-ceiling displays. Available in single-sided (floating wall effects) or double-sided (transparent room dividers) arrangements.

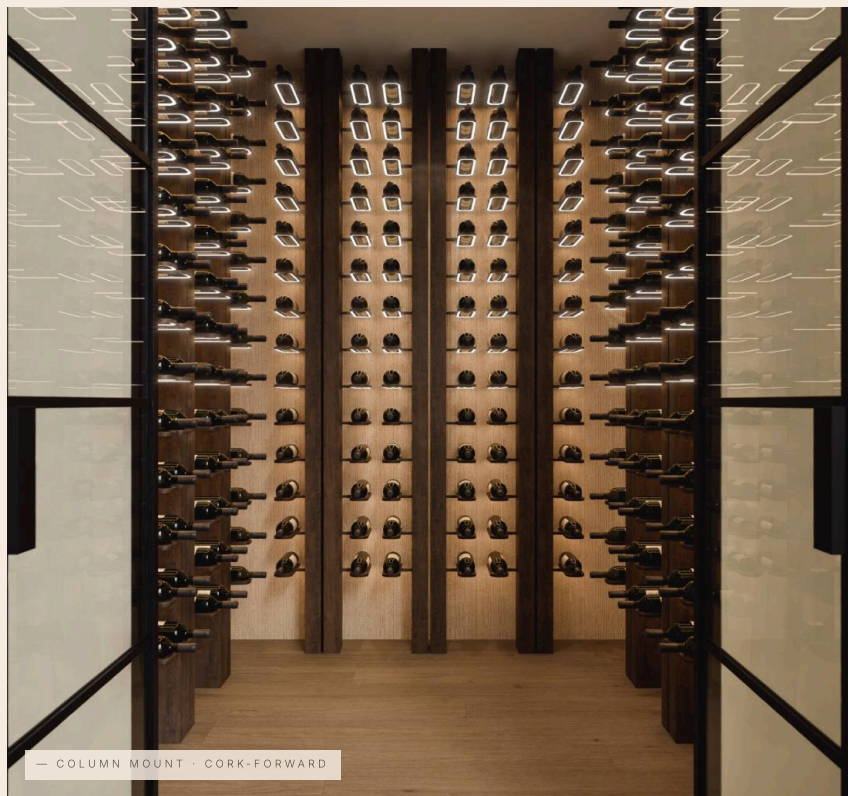


— PANEL MOUNT · LABEL-FORWARD

## 02. Panel Mount

### *Label-forward display*

Cradles are mounted directly to a finished wall or panel — a sleek, label-forward showcase. Ideal for retrofit projects or new construction where a clean, flush wall appearance is desired; the wine becomes the focal point against any backdrop.



— COLUMN MOUNT · CORK-FORWARD

### 03. Column Mount

*Cork-forward storage*

High-density storage optimised for maximum capacity, displaying the cork for quick inventory reference. Two layout options: Aligned, for highly organised rows and a minimalist, structured look; or Staggered, for a dynamic, contemporary texture that enhances visibility of individual bottles.

— 06.04 · MIX AND COMBINE

## Ultimate *customization.*

The modular nature of the system ensures total design freedom. All configurations — Panel Mounts, Label-Forward Columns, and Cork-Forward Storage — can be effortlessly mixed within a single installation to balance density with display.

— A DIRECTORY OF THREE

*Combine freely.*

**01** Column Mount · *Label-forward display* — SEE P. 20  
 Standalone architecture · floating walls · room dividers

**02** Panel Mount · *Label-forward display* — SEE P. 21  
 Flush to a finished wall · retrofit-ready · label as artwork

**03** Column Mount · *Cork-forward storage* — SEE P. 22  
 High density · aligned or staggered · the working cellar

*"Density where you need it; display where it counts — within a single, considered wall."*

— TIERED, MULTI-FUNCTIONAL

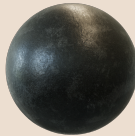
— 07 · TWELVE FINISHES

# Cradle finishes.

Refined metals to hand-finished woods. Twelve standard finishes — every cradle made to complement your unique space.



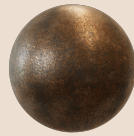
ANTIQUE BRASS



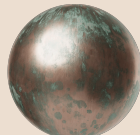
BLACK METAL



CHROME



BRONZE



COPPER



POLISHED BRASS



POLISHED NICKEL



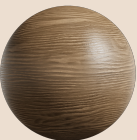
STAINLESS STEEL



WALNUT  
*[wood]*



WHITEWASHED  
OAK  
*[wood]*



RIFT OAK  
*[wood]*



BLACK OAK  
*[wood]*

\* Swatches indicative - final finishes hand-applied to spec.

— 07 · A NOTE ON MATERIALS

## Hand-finished, to *your* specifications.

— CRADLE FINISHES & MATERIALS

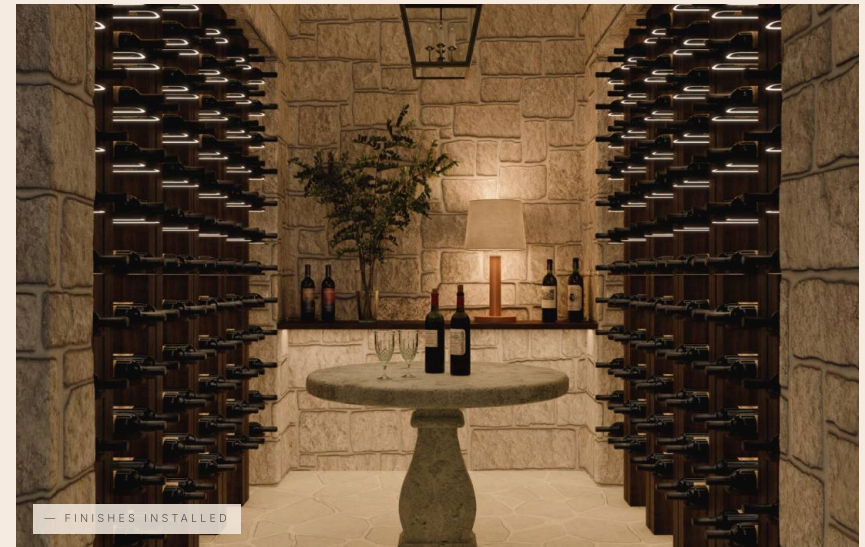
Cradles can be manufactured from a wide variety of materials and finishes — polished or powder-coated metals, and solid hardwoods structurally reinforced with aluminum stiffeners and stabilized with epoxy resin.

Each cradle is hand-finished to your exact specifications — every grain, every patina considered.

— COLUMNS & PANELS

Uva has partnered with leading design firms to offer a complete smart cellar design solution — including the precisely finished mounting columns and panels our proprietary cradles connect to.

We also collaborate directly with your designer to ensure cradle finishes complement the cellar's aesthetic — a single, unbroken vision of luxury.



— 08 · INSIDE THE CRADLE

# Tech *highlights.*

A closer look at the components that define Uva Cellars' intelligent design — where form, function, and precision converge.

**A** CRADLE  
Slim, minimalist structural support — houses all electronics and sensors.

**B** LED ARRAY  
680 RGB+W Chip-on-Board LEDs · two addressable segments · integrated bottle sensors.

**C** CONTROL PCB  
Compact PCB in the cradle stem; LED control + proprietary bottle-sensor protocol.

**D** LIGHT DIFFUSER  
Dense LED layout achieves uniform light without a bulky diffuser.

**E** CRADLE CAP  
Precision-engineered cap conceals all electronics — no visible seams or fasteners.

— 08.A · THE CRADLE

The cradle, *exploded.*





— THE CRADLE

Each wine cradle merges advanced engineering with minimalist form — balancing design, structural integrity, power and data transmission, heat dissipation, and light diffusion within an exceptionally compact product.

Electronics integrate into the body via custom-machined thermal pathways and light channels. Secured with no visible fasteners — technology reduced to its purest, most invisible expression.



— A FEAT OF PRECISION ENGINEERING

Technology,  
*refined.*

*Effortless and intentional.*

— 09 · EFFORTLESS INTEGRATION

# Streamlined *installation.*

Advanced engineering designed for seamless integration — every component aligning effortlessly to maintain a clean, refined aesthetic.

**A** SIMPLE MOUNTING  
Each unit mounts cleanly and is secured with concealed fasteners.

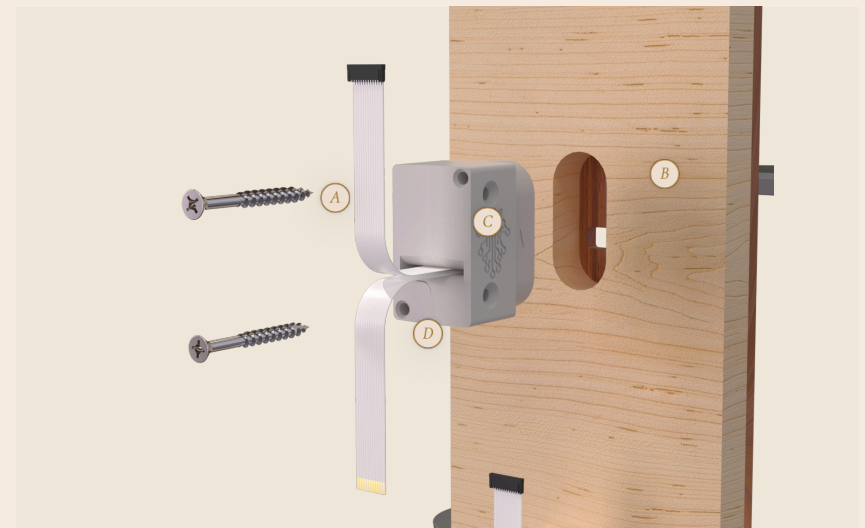
**B** CUSTOM SPACING  
Custom bottle spacing balances density, accessibility, and visual impact.

**C** CRADLE RECEPTACLE  
Proprietary tool-free latching aligns, secures, and connects power in one motion.

**D** INTEGRATED CABLING  
Addressless dual-bus protocol on Flexible Printed Circuits — no traditional connectors.

— 09.A · INSTALLATION

Mount, latch, *illuminate.*



— SIMPLE SETUP

### Seamless app pairing.

Your phone or tablet automatically detects the cellar via Bluetooth — the app guides you through pairing in under a minute.

— DISCREET CONTROL

### Hidden enclosure.

The recessed control housing conceals power supply and hub. Hardwire or plug-in — only standard mains required.

— 10 · THE CRADLE, IN NUMBERS

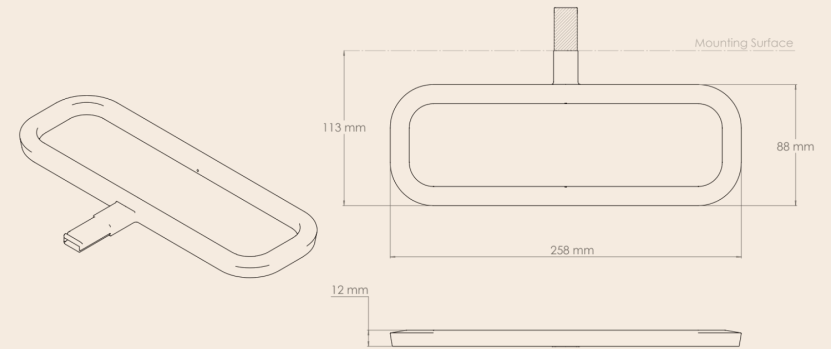
# Specifications.

— FEATURE	— DETAIL	— NOTE
LED TYPE	608 Full-Color COB LEDs · per cradle	Chosen for high density and superior light uniformity, eliminating the need for large diffusers.
COLOR CHANNELS	Red · Green · Blue · Warm White	Individually addressable elements with a dedicated 2,700K warm-white channel.
LIGHTING CHANNELS	2 addressable channels · per cradle	Spotlight provides direct illumination; Mood serves as diffuse ambient backlight.
LED CONTROL	8 constant-current drivers · per cradle	Each channel independently driven via integrated single-wire serial protocol.
SENSOR TYPE	Discrete infrared (IR)	Proprietary optical array for ultra-responsive, real-time bottle presence detection.
SENSOR PROTOCOL	Synchronous, addressless serial	In-house protocol for the bottle sensor array — high responsiveness and robust data integrity.
ELECTRONICS HOUSING	Compact PCB	All critical components housed on a single, accessible PCB in the cradle stem.

— 10.A · CRADLE DIMENSIONS

Drawn at *scale*.

— PLAN, SIDE & SECTION · MM



— WIDTH

258 mm

— DEPTH

113 mm

— HEIGHT

12 mm

# Contact *Us.*

— *We'll make something beautiful  
together.*

— OFFICE

*Edmonton, Alberta · Canada*

— DIRECT

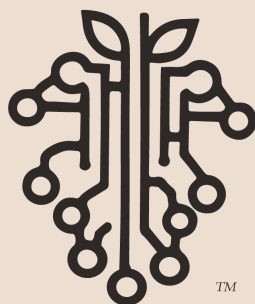
*hello@uvacellars.com  
+1 (825) 510-2060*

— ON THE WEB

*uvacellars.com  
@uvacellars · Instagram, Facebook & LinkedIn*



*A quiet room, ready for its bottles.*



*The Catalogue · Edition 2026*

---

*uvacellars.com · Edmonton, Canada*

*© 2026 Uva Cellars Inc. — All rights reserved. Printed in Canada.*